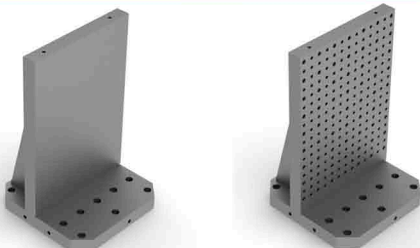


STEVENS

Manufacturing Solutions for HMC's

A summary of 630mm Horizontal Machining Centers

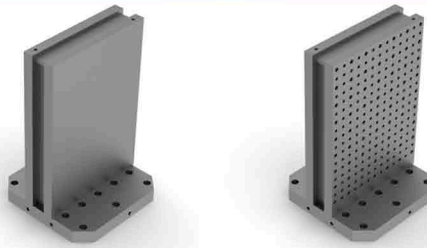
1 Sided Angle Plate



248-1-262-350-BF

248-1-262-350-ST

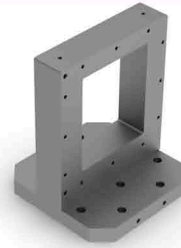
2 Sided Tombstone



248-2-262058-350-BF

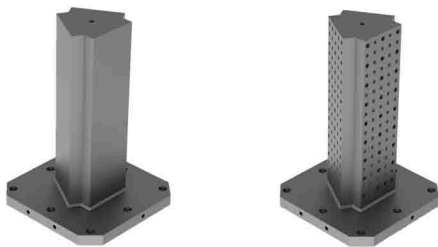
248-2-262058-350-ST

2 Sided Window



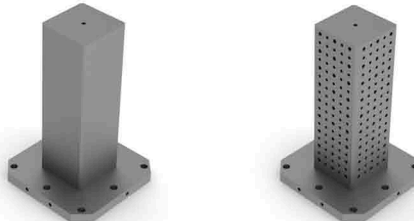
248-2W-262049-300

3-Sided Tombstone



248-3N-XXX014-350-BF* 248-3N-XXX014-350-ST*

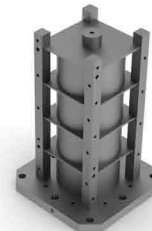
4 Sided Tombstone



248-4-XXX-350-BF*

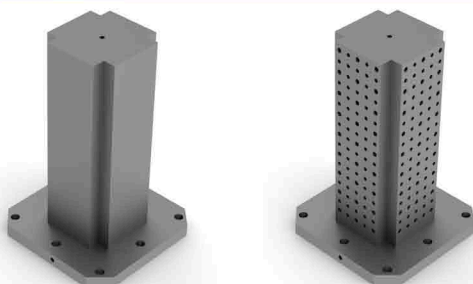
248-4-XXX-350-ST*

Silo Column



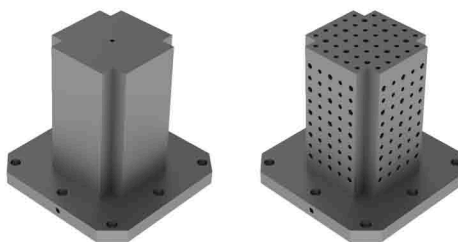
248-4S-170-340-ST

4 Sided w/ Notched Corner



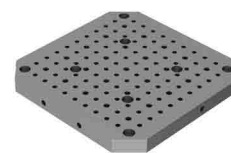
248-4N-XXX014-350-BF* 248-4N-XXX014-350-BF*

4 Sided w/ Platform Top



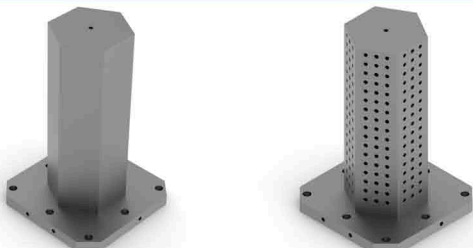
248-4N-112014-200-BFQ 248-4N-112014-200-STQ

Subplate



248248A-2.5

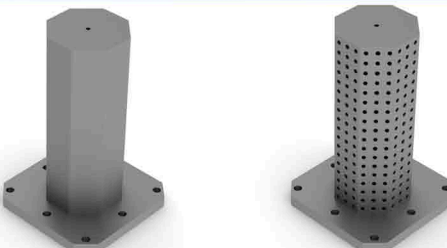
6 Sided Tombstone



248-6-XXX-350-BF

248-6-XXX-350-ST

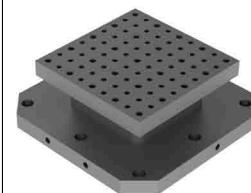
8 Sided Tombstone



248-8-XXX-350-BF*

248-8-XXX-350-ST*

Riser



248-0-115-056-ST

STEVENS ENGINEERING, INC.

3649 W. Clarendon Avenue, Phoenix, AZ 85019

800.635.0657

602.272.6766

Fax 602.272.0717

www.stevenseng.com

*Multiple face widths available

2073MC1112